



<b>Technical Data Sheet</b>
<b>Protecta FR Fire Collars</b>

### Product Description

Protecta FR Collars provide a robust, versatile and economic fire seal to provide fire resistance in compartment walls (including gypsum stud walls) and floors where openings in these construction elements are formed to accommodate plastic service pipes. In a fire attack situation, the intumescent lining within the collar expands to form a robust char barrier which prevents the passage of flames and hot gases through voids created by the melting plastic pipe and in addition restricts temperature rise on the non-fire side of the wall or floor.

Protecta FR Collars are made from corrosion resistant zinc coated steel lined with a water resistant polymer based intumescent material. Protecta FR Collars are supplied in 5 standard sizes, but have been tested 'oversize' on smaller diameter plastic pipes thereby reducing the need to use more costly non-standard sizes. Protecta FR Collars are particularly suitable when pipes are fitted in tight corners (see installation instructions). Protecta FR Collars are also suitable for use when plastic pipes are installed through mineral wool penetration systems, without the need for any additional mechanical fixings.

### Physical Properties

Composition:	Zinc-coated steel shell with intumescent liner
Intumescent activation temperature:	Approximately 180° C
Intumescent expansion pressure:	2.55 bar +/- 0.35 bar
Intumescent volume expansion:	110ml +/- 25ml (for a 1.8mm thick sample)
Service temperature:	-15°C - +75°C

**Protecta FR Collars contain no hazardous materials and are asbestos free**  
**This data sheet should be read in conjunction with the MSDS for this product**

### Fire Performance

Tested in accordance with:

**EN1363-1:1999 & EN1366-3:2004**

<u>Construction</u>	<u>Integrity</u>	<u>Insulation</u>
Timber/Steel Stud Drywalls	120 mins	60 mins
Concrete/Blockwalls:		
- Up to 110mm	240 mins	240 mins
- Up to 160mm	120 mins	120 mins
Concrete Floors:		
- Up to 110mm	240 mins	240 mins
- Up to 160mm	120 mins	120 mins
Mineral Wool Boards	90 mins	90 mins

### Dimensional Data

<u>Size</u>	<u>To Suit Pipe OD</u>	<u>Height</u>	<u>Shell O/D*</u>
55mm	32-55mm	50mm	72mm
82mm	56-82mm	50mm	103mm
110mm	83-110mm	50mm	135mm
125mm	111-125mm	60mm	160mm
160mm	126-160mm	60mm	203mm

\* approx. dimension

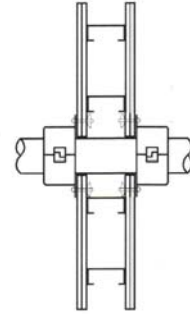
**Northern Fire Engineering Ltd, Unit 2, Derwent Court,  
 Earlsway, Team Valley Trading Estate, Gateshead,  
 NE11 0TF, UK**  
**Tel: +44 (0)191 4828944, Fax: +44 (0)191 4828969**  
**Web: <http://www.nfe-ltd.co.uk>**  
**Email: [info@nfe-ltd.co.uk](mailto:info@nfe-ltd.co.uk)**

As part of our policy of on-going product development and testing, we reserve the right to modify, alter or change product specifications without giving notice. All information contained in this document is given in good faith and is provided for guidance only. As Northern Fire Engineering Ltd has no control over the methods or competence of installation, or of prevailing site conditions, no warranties, expressed or implied, are intended to be given as to the actual performance of the products mentioned or referred to herein and no liability whatsoever will be accepted for any loss, damage or injury arising from the use of the information given.

# Installation Instructions

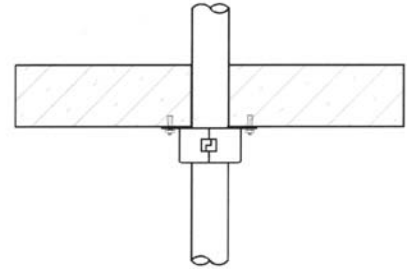
## Fig A. Surface Mounting to Timber or Steel Stud Drywall

1. A collar is required on both sides of the wall
2. Attach the collar around the pipe and slide firmly up against the plasterboard wall
3. Mark location of fixings and securely fasten collar to both sides of the wall using suitable non combustible drywall anchors



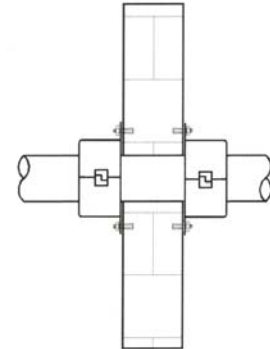
## Fig B. Surface Mounting to Concrete Slab

1. A collar is required on the underside of the slab only
2. Attach the collar around the pipe and slide firmly up against the underside of the slab
3. Mark location of fixings and securely fasten collar to slab using suitable non combustible anchors or bolts (recommended 50mm minimum length)
4. If the pipe is tightly fitted into a corner, separate the 2 halves and fit one half of the collar behind the pipe. Once this is securely fastened to the slab, the other half can be attached using the slidelocks and then fixed onto the slab
5. If the surface of the slab is irregular, apply a bead of intumescent mastic around the circumference of the collar before mechanical attachment



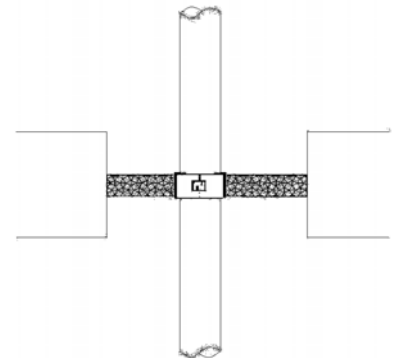
## Fig C. Surface Mounting to Concrete/Blockwalls

1. A collar is required on both sides of the wall unless the fire risk is limited to 1 side only
2. Attach the collar around the pipe and slide firmly up against the wall
3. Mark location of fixings and securely fasten collar to both sides of the wall using suitable non combustible anchors or bolts (recommended 50mm minimum length)
4. If the surface of the wall is irregular, apply a bead of intumescent mastic around the circumference of the collar before mechanical attachment



## Fig D. Cast-into Mineral Wool Boards

1. The collar should be fitted through the full thickness of the mineral wool board
2. Mark the circumference of the collar shell on the board and cut out the mineral wool around the pipe to accommodate the collar
3. Fasten the collar around the pipe and push tightly into the annular space between the pipe and the board
4. Seal any gaps between the external shell and board with an intumescent sealant



As part of our policy of on-going product development and testing, we reserve the right to modify, alter or change product specifications without giving notice. All information contained in this document is given in good faith and is provided for guidance only. As Northern Fire Engineering Ltd has no control over the methods or competence of installation, or of prevailing site conditions, no warranties, expressed or implied, are intended to be given as to the actual performance of the products mentioned or referred to herein and no liability whatsoever will be accepted for any loss, damage or injury arising from the use of the information given.